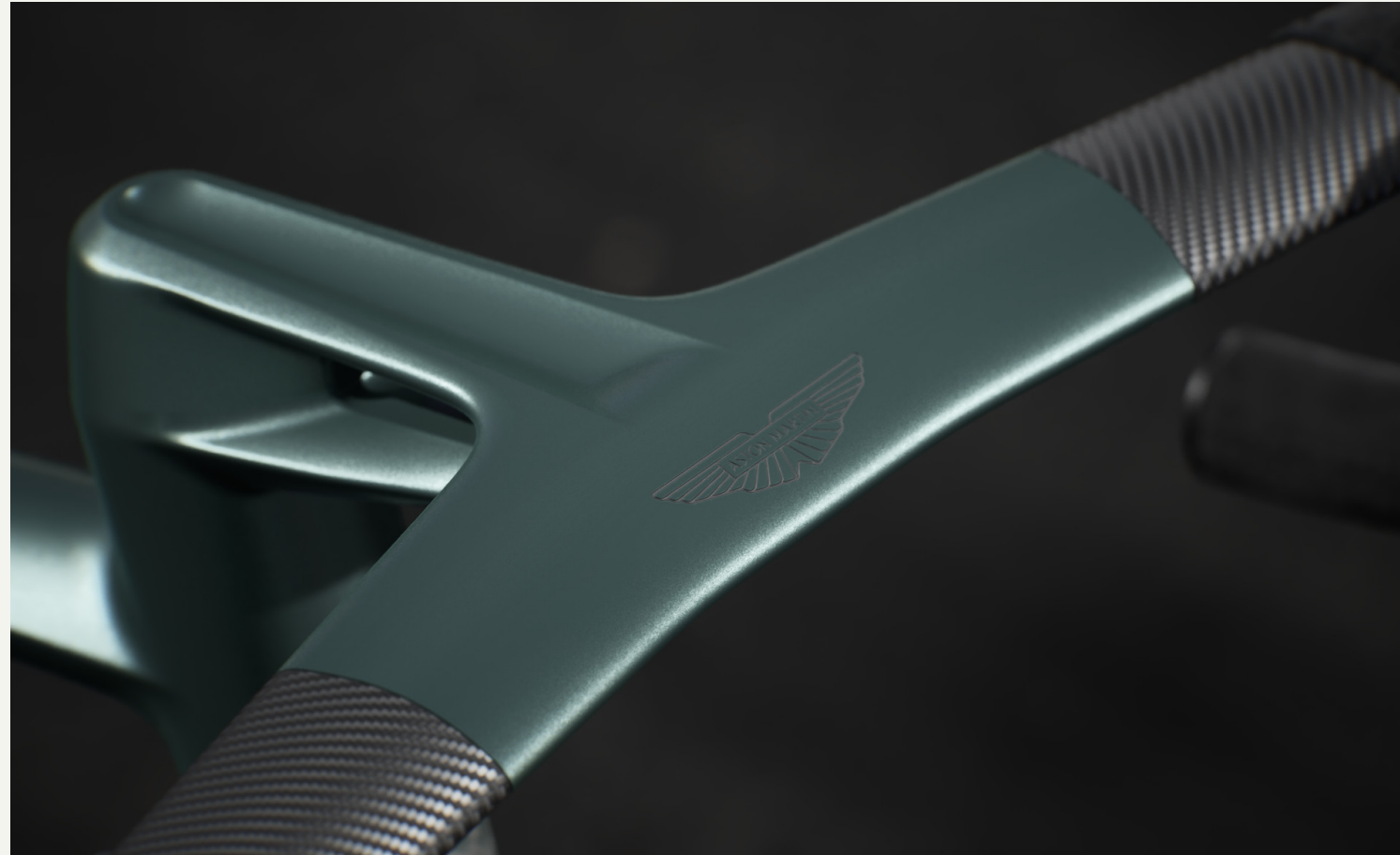




**J.LAVERACK**

## J.LAVERACK ASTON MARTIN .1R

Your Personal Specification





ASTON MA



## J.LAVERACK ASTON MARTIN .1R

Tailored specification

The .1R elevates the bespoke bicycle to unprecedented levels, resulting in a beautiful, timeless design that fits the rider with millimetre precision. By micro-measuring then manufacturing nearly every element of the bicycle, each part can marry perfectly with its adjoining component to create the cleanest looking, most coherent and integrated design. It takes outstanding engineering innovation allied to peerless craftsmanship to produce each .1R, a process that starts with a specialist bicycle fit at Aston Martin headquarters in Gaydon, Warwickshire.

Enclosed you will find your personal specification of this focused performance product which builds on our illustrious history.





## J.LAVERACK ASTON MARTIN .1R

### Frame

The timeless elegance of the hand-built .1R frame is achieved by using Formula One engineering technology to fuse the titanium lugs with carbon fibre tubes. The beautiful lugs are 3D printed from high purity Ti 6Al/4V titanium, while the sculpted carbon fibre tubes are made from a herringbone weave that has stunning symmetry.

The frame can either be left 'naked' to showcase the beauty of its materials, or painted, with the option to select the same or complementary paint schemes for the lugs and tubes.

### Options

---

Accent colours	Armour Black
Frame	Aston Martin Racing Green Satin
Forks	Aston Martin Racing Green Satin
Laverack headbadge and frame graphics	Stainless steel
Seatpost	Aston Martin Racing Green Satin





## J.LAVERACK ASTON MARTIN .1R

### Cockpit

The Sphyr titanium stem, named after the hammerhead shark (*Sphyrna*), is the world's first to use no visible bolts, a patent-pending triumph of engineering ingenuity. Each stem is micro-measured to the dimensions of the individual rider and features a laser-etched Aston Martin logo.

The saddle and handlebars can be trimmed in leather or Alcantara, in a wide choice of colours. Even the colour of the seatpost and its jewel-like ring can be specified.

### Options

---

Handlebar drops  
Lugs & handlebar stem

Handlebar & saddle covering  
Saddle titanium rivet X1

Satin Carbon  
Aston Martin Racing Green  
Satin  
Black  
Pave



## J.LAVERACK ASTON MARTIN .1R

### Brakes

Designed exclusively for the .1R, the brake callipers are precision machined from a single block of aluminium, then fine-tuned with spark erosion to integrate perfectly with the frame and fork. There are four pistons – twice as many as standard disc brakes – made from indestructible titanium and tested on a specially designed rig over more than 10,000 cycles to ensure they clamp instantly and retract flawlessly.

Both the calliper and the brake rotor, with its Valkyrie wheel-inspired design, are finished in an advanced Cerakote ceramic coating, in a choice of colours including a unique bronze. These components can be colourmatched to the machined bottom bracket cups.

### Options

---

Front Brake caliper housing

Photon Lime

Rear Brake caliper housing

Photon Lime



## J.LAVERACK ASTON MARTIN .1R

### Drivetrain

The .1R features innovative carbon cranks with 3D-printed titanium tips. This allows for the crank length to be specified in minuscule increments to further enhance the perfect overall fit of the bicycle. The crank tips can be colour-matched to the bicycle.

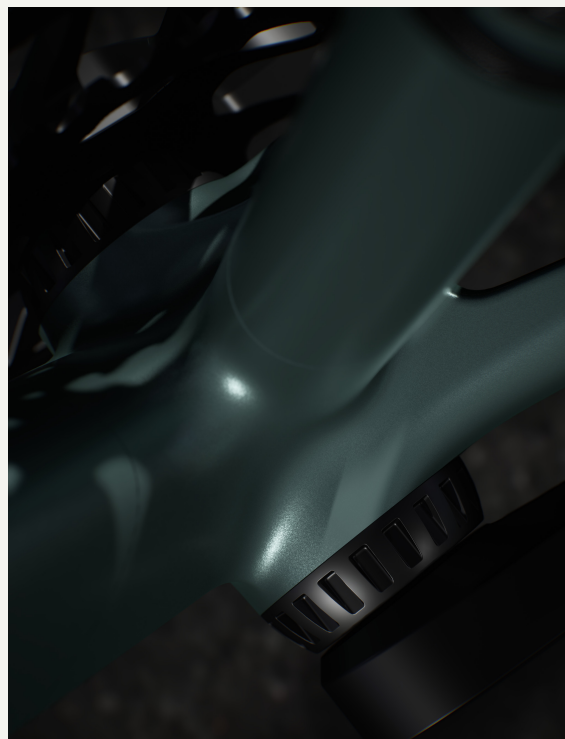
Both chainrings are machined from solid aluminium billet.

### Options

---

Chainset

Cerakote Armour Black



## J.LAVERACK ASTON MARTIN .1R

### Gears and transmission

The .1R is available with a choice of top flight electronic transmissions for exceptionally quiet, ultra-smooth gear changes, as seen on the flagship bicycles of the planet's finest riders in the UCI World Tour. Choose between Shimano Dura-Ace Di2, Campagnolo Super Record Wireless, or SRAM Red eTap AXS. All three systems are 12-speed and wireless.

### Options

---

Shimano Dura-Ace Di2

Campagnolo Super Record Wireless

SRAM Red eTap AXS



TIN



## J.LAVERACK ASTON MARTIN .1R

### Wheels

The .1R rolls on 55mm deep Aera Components Æ|55 carbon tubeless rims. The 7075 aluminium hubs have been designed specifically for the .R1 and are machined to perfection before being finished in a unique brevet black colourway. The 28 Sapim CX-Ray spokes continue the black colour scheme, including black brass nipples. Even the Continental GP5000S TR 30mm tyres are stealth black, created especially for this project.

### Options

---

Rims	Aera Components Æ 55 carbon tubeless
Hub	7075 aluminium, individually designed for the .1R
Spokes	28 Sapim CX-Ray
Tyres	Continental GP5000S TR 30mm in stealth black



# J.LAVERACK ASTON MARTIN .1R

## Your Personal Specification

### Transmission

Shimano Dura-Ace Di2  
Campagnolo Super Record Wireless  
SRAM Red eTap AXS

### Wheels

Rims Aera Components Æ|55 carbon tubeless  
Hub 7075 aluminium, individually designed for the .1R  
Spokes 28 Sapim CX-Ray  
Tyres Continental GP5000S TR 30mm in stealth black

### Exterior

Accent colours	Armour Black
Brake Calipers	Armour Black
Chainset	Cerakote Armour Black
Front Brake caliper housing	Photon Lime
Frame	Aston Martin Racing Green Satin
Forks	Aston Martin Racing Green Satin
Handlebar drops	Satin Carbon
Laverack headbadge and frame graphics	Stainless steel
Lugs & handlebar stem	Aston Martin Racing Green Satin
Rear Brake caliper housing	Photon Lime
Handlebar & saddle covering	Black
Seatpost	Aston Martin Racing Green Satin
Saddle titanium rivet X1	Pave



J.LAVERACK ASTON MARTIN .1R

---